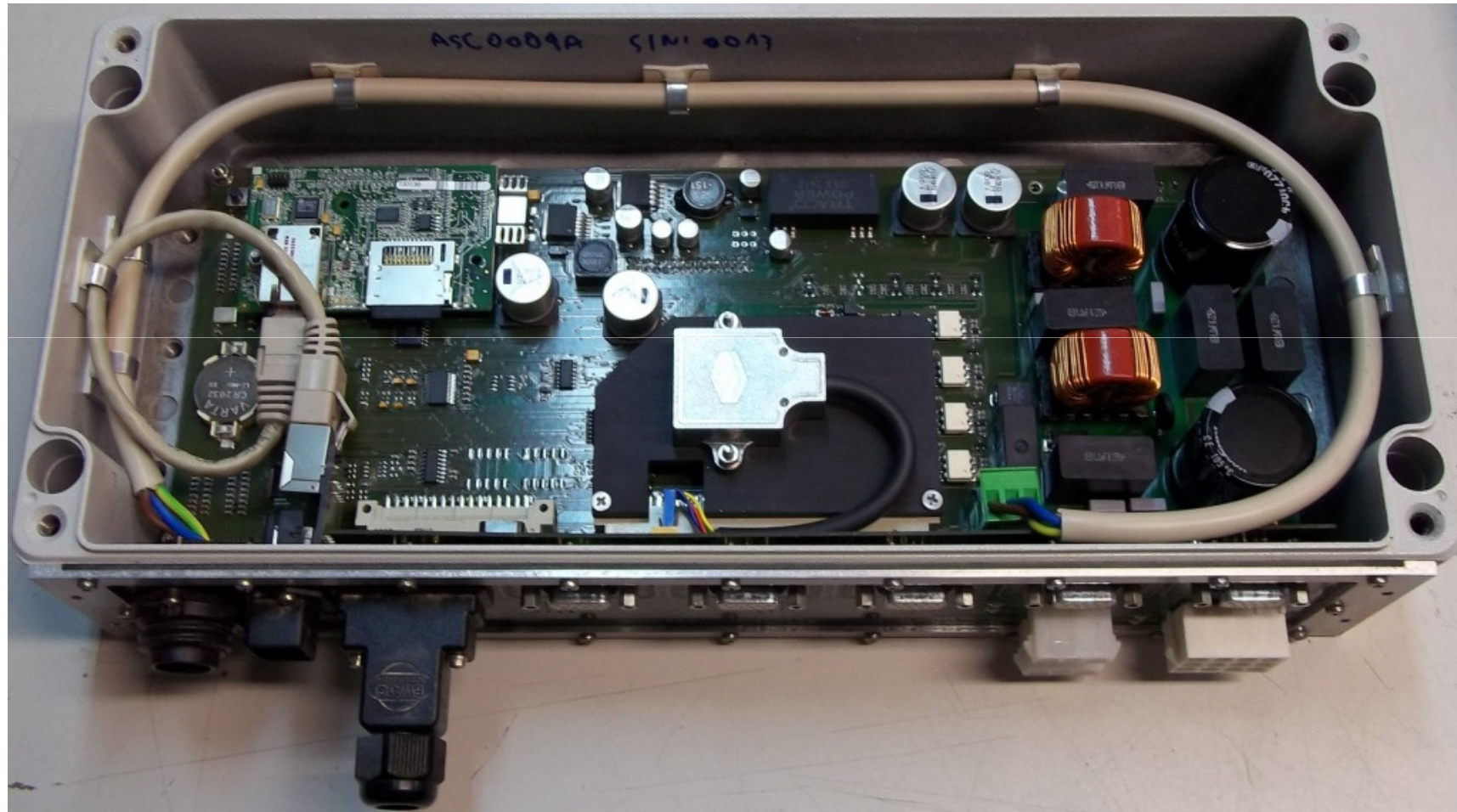
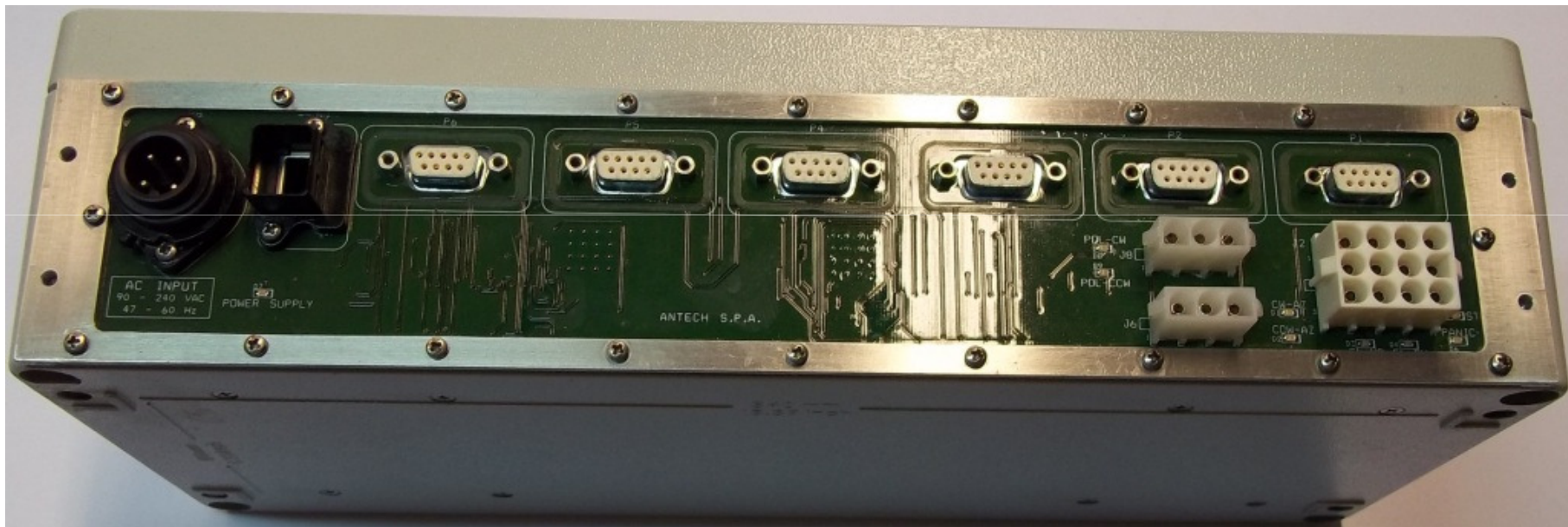


DESIGN EXAMPLE – ANTENNA CONTROL UNIT (ACU)

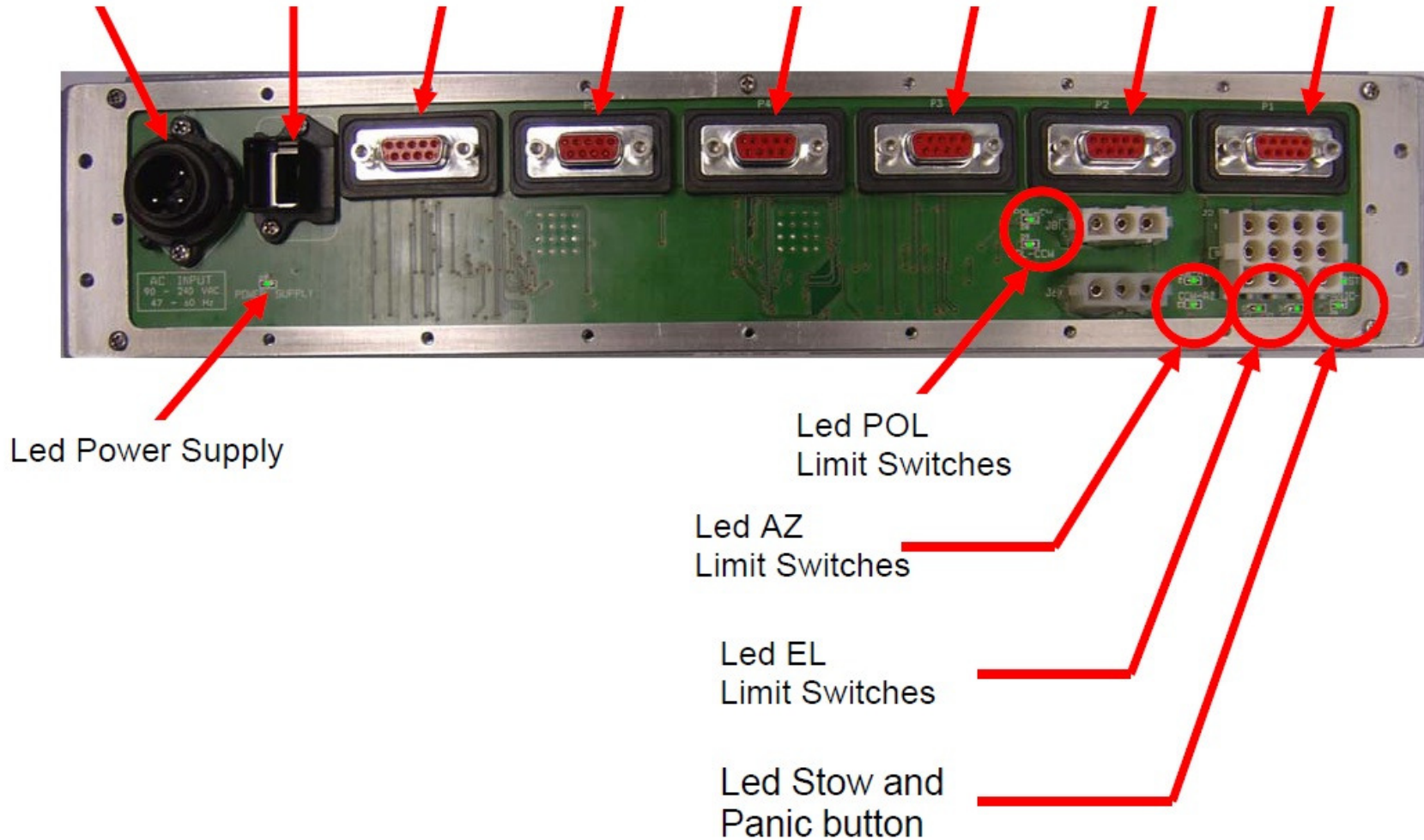


DESIGN EXAMPLE – ANTENNA CONTROL UNIT (ACU)



DESIGN EXAMPLE – ANTENNA CONTROL UNIT (ACU)

Power Supply LAN RS485 GPS BRC ENC AZ ENC EL POL



DESIGN EXAMPLE – ANTENNA CONTROL UNIT (ACU)

The screenshot displays the Antenna Control Unit WebGui interface in a browser window. The page title is "Antenna Pointing".

Antenna Pointing Parameters:

Azimuth	Elevation	Polarization	Rx Level
19.00°	19.00°	20.0°	10.10

Operational Status:

- Moving State: Standby
- Operative Mode: Tracking Off
- Time: 09:48:01

Antenna Preset:

Field	Value	Action
Azimuth	<input type="text"/>	Invia
Elevation	<input type="text"/>	Invia
Polarization	<input type="text"/>	Invia
		Standby

Limit Status:

Hardware Limit	Software Limit
<input checked="" type="checkbox"/> Up Limit	<input checked="" type="checkbox"/> Up Limit
<input checked="" type="checkbox"/> Down Limit	<input checked="" type="checkbox"/> Down Limit
<input checked="" type="checkbox"/> Cw Limit	<input checked="" type="checkbox"/> Cw Limit
<input checked="" type="checkbox"/> CCw Limit	<input checked="" type="checkbox"/> CCw Limit
<input checked="" type="checkbox"/> Pol Cw Limit	<input checked="" type="checkbox"/> Pol Cw Limit
<input checked="" type="checkbox"/> Pol Ccw Limit	<input checked="" type="checkbox"/> Pol Ccw Limit

Navigation Panel (Left):

- Antenna Pointing
- Sefup
- Sat Pointing
- Beacon Rx
- Tracking
- Info
- Manual Step

Control buttons: Standby, directional arrows (up, down, left, right), and a circular refresh button.